

*Versatile & Functional*  
**STUDIOS**



# *Versatile & Functional* **STUDIOS**

With advanced inbuilt audio visual technology and the highest quality in architectural finishes, The Studios provide a sophisticated and contemporary solution for your next meeting or event.

The secluded location makes it the preferred venue for intimate meetings, classroom style workshops, business presentations or dinners, whilst the foyer area accommodates morning and afternoon tea and standing lunch breaks.

Our professional team will assist you with all of the details to ensure your meeting or event operates seamlessly.

## **AUDIO VISUAL SERVICES**

AVPartners is a leading audio visual provider and Crown Perth's in-house audio visual partner. AVPartners will assist in the delivery of technical production, lighting, event design and styling of your event.

The experienced audio visual team at AVPartners will assist event organisers with event creative, technical and entertainment elements, ensuring a stress free, seamless and highly successful event or meeting.

## **CONTACT**

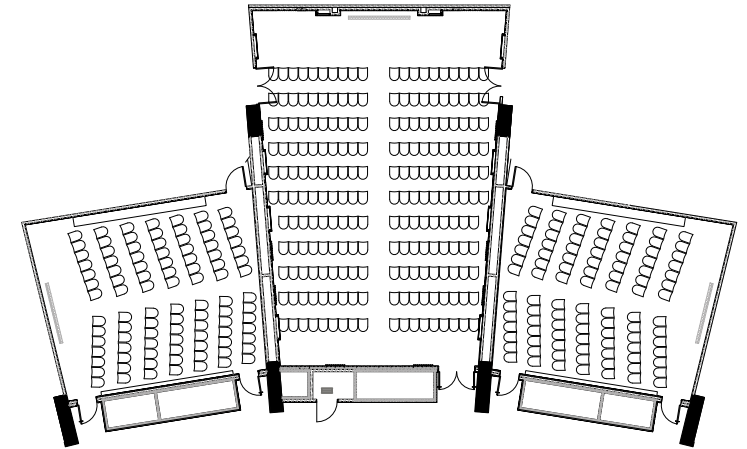
Phone: +61 8 9362 7574  
Email: [eventsales@crownpertth.com.au](mailto:eventsales@crownpertth.com.au)  
[www.crowneventsandconferences.com.au](http://www.crowneventsandconferences.com.au)  
Great Eastern Highway Perth  
Western Australia 6100



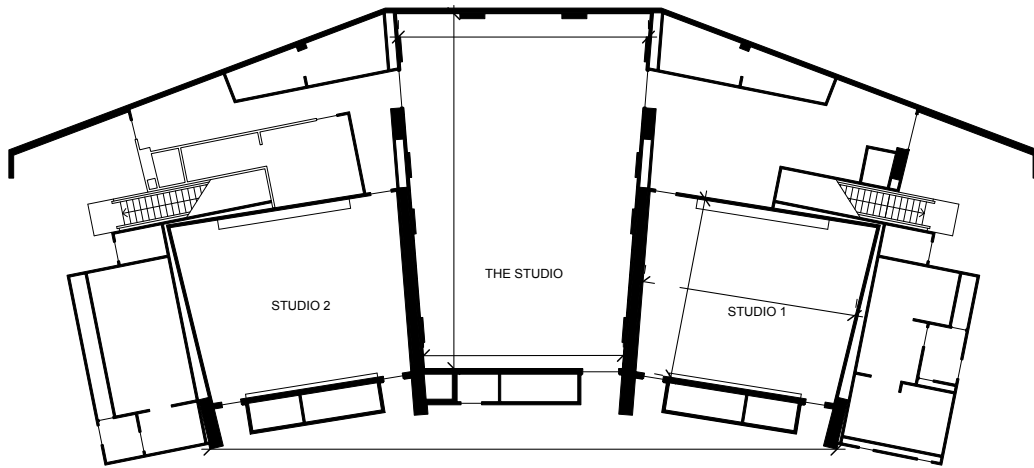
**CROWN EVENTS  
& CONFERENCES**

**PERTH**

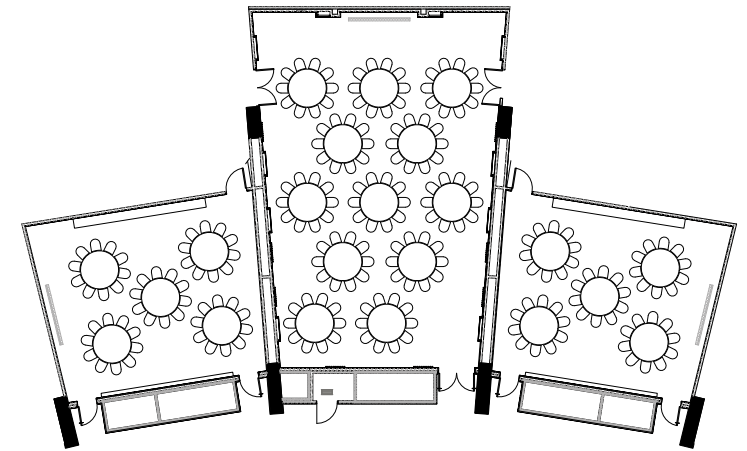
Room	Area (m <sup>2</sup> )	Height (m)	Booths (3x2)	Theatre	Classroom (2.5 per table)	Cabaret (No Dance Floor)	Banquet (No Dance Floor)	Banquet (Stage & Dance Floor)	Cocktail Reception	U-Shape 2.5 per table	Board Room
Studio One	89	2.8	-	60	40	40	50	-	60	24	28
Studio Two	89	2.8	-	60	40	40	50	-	60	24	28
The Studio	179	2.8	-	120	65	72	90*	*	132	36	40



**STUDIOS THEATRE**



**STUDIOS FLOORPLAN**



**STUDIOS BANQUET**

